



Extension

UNIVERSITY OF WISCONSIN-MADISON
BAYFIELD COUNTY



above expectations
BAYFIELD
C O U N T Y

2023 Annual Report



“Bringing the resources of the University of Wisconsin-Madison to Bayfield County.”

Inside this issue:

Welcome!	2	Office Manager	5	Youth Development & 4-H	10
Investing in Extension	3	Food Wise	6	Agriculture	12
Meet the Staff	4	Human Development	8	Community Development	14
Meet the Committee Members	5	<i>Cover Photo by Theresa LaChappelle</i>			



Welcome!

January 1, 2023 – December 31, 2023

Dear Partners and Friends:

In this 2023 annual report, you'll find that at the UW-Madison Division of Extension Bayfield County, our resourceful and resilient educators and staff are focused on helping the community members of Bayfield County to meet community challenges, protect natural resources, strengthen families and support young people. We worked to continue connecting local people with the knowledge and research of the University of Wisconsin. We utilized our local, regional and statewide networks to support communities in responding to emerging issues and we brought new ideas and great resources to Bayfield County. In 2023, we successfully brought on board a second Community Development Educator focused on helping communities solve the housing issues in the county, as part of a pilot project co-funded by UW-Madison Division of Extension. Bayfield County is leading the way on finding solutions to this emerging, statewide problem!

We developed this report with data and stories from our work in 2023. We highlight positive outcomes from all of our major educational programs covering community and economic development, 4-H and youth, nutrition, agriculture/horticulture, and individual and family well-being. Our staff works to address high priority local needs through our educational programming and our collaborations with community groups, volunteers and program partners. We could not be effective in our work without the valuable contributions of our various partners. Strong partnerships are at the heart of our programs -- we can achieve more together!

THANK YOU to the Bayfield County Board of Supervisors, the County Administrator and the Agriculture and Extension Education Committee for the continued support of UW-Madison Extension programming in Bayfield County during 2023. We appreciate the opportunity to serve Bayfield County residents and local efforts to strengthen our people, our communities and our economy.

On behalf of the Extension Bayfield County staff,

Mary Pardee
Area Extension Director

PURPOSE to which we commit...
WE TEACH, LEARN, LEAD AND SERVE, CONNECTING PEOPLE WITH THE UNIVERSITY OF WISCONSIN-MADISON, AND ENGAGING WITH THEM IN TRANSFORMING LIVES AND COMMUNITIES.

VISION of what we want to become...
A THRIVING, WELL-EDUCATED AND BOUNTIFUL EDUCATIONAL RESOURCE THAT REFLECTS THE RICH DIVERSITY OF THE STATE.

VALUES we strive to live by...

COMMUNITY We empower others and ourselves by listening to learning from, and respecting local knowledge. We value our partnership and believe community voices are critical to success. We work in community with one another to build a culture	DISCOVERY We promote lifelong learning, unbiased, non-commercial education and excellence through our scholarly work. We integrate University research with community-based knowledge to explore new solutions and their practical applications. We encourage innovation in teaching, research and outreach to serve the public good.	INCLUSIVENESS We recognize, appreciate and honor the differences, similarities and contributions of all people and communities. We are intentional in our efforts to ensure equity, justice and fairness. We embrace new ideas and approaches in our work.	RELATIONSHIPS We foster positive relationships through honesty, open communication and accountability. We meet educational needs by creating linkages among cultural, economic and environmental contexts. We recognize and trust the essential and interconnected nature of all roles within Extension.	RESPECT We appreciate and serve all members of our state's resources. We honor and value each other's time and talents. We seek to meet for a balance between life and work priorities.
--	---	--	--	---

UNIVERSITY OF WISCONSIN-MADISON DIVISION OF EXTENSION
Extension UNIVERSITY OF WISCONSIN-MADISON



Investing in Extension

In 2023, the work of the Bayfield County Extension office was completed by eight educators (some shared with adjacent counties), two support staff, a research assistant and seasonal summer program assistants. Not all those folks were on staff at once - needs change with the time of year, funding availability and special opportunities. Over the course of a year, Extension touches a lot of community needs!

The success of Bayfield County Extension programming relies on 4 aspects:

- County funding
- State funding
- Donations, Grants & Fees
- Volunteers

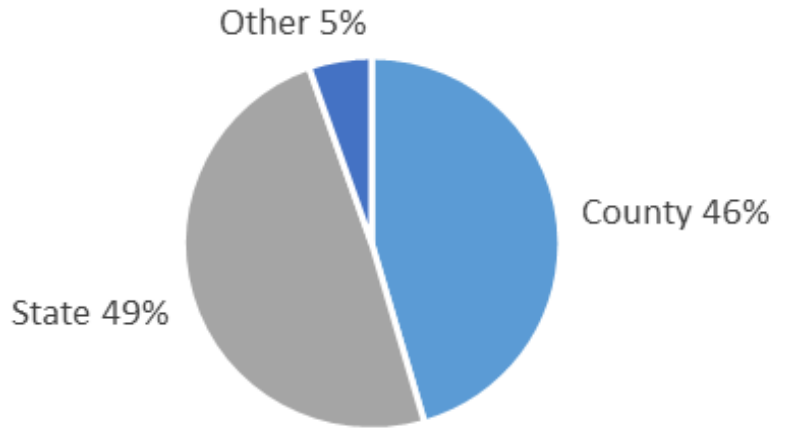
In Extension, educators are co-funded by the county and state. Bayfield County also supplies funding for a Youth Program summer assistant and a 4-H Operations & Communications Associate. In addition, county funds help to outfit Extension with office supplies, technology, program and travel costs, as well as excellent support staff.

FoodWise, our nutrition education program, is paid for by federal SNAP-Ed (Supplemental Nutrition Assistance Program Education) funds that come through UW-Madison Division of Extension. Bayfield County FoodWise is part of a three-county project which also includes Ashland and Iron Counties. County funds are not involved in the salaries of the FoodWise Coordinator, FoodWise Educator, or Area Extension Director. Additional grant funds are a source for the agriculture research assistant.

The charts show the basics of where our funding comes from.

Local educators are part of a statewide network that supplies programming support, topic expertise, professional development, and funding. Bayfield County also benefits from the expertise of statewide Extension specialists on topics such as economic development and climate change.

Extension Funding 2023



Extension Funding in 2023		
County	UW-Madison Staff Fees	\$ 215,178
	Support Staff	\$ 81,614
	County Educational Staff	\$ 1,067
	Office & Technology	\$ 8,717
	Educational Program Support	\$ 22,184
	Committee Expense	\$ 2,426
	TOTAL	\$ 331,186
State	Staff Salary/Fringe	\$ 214,912
	FoodWise Staff & Program Support	\$ 63,178
	Program Support	\$ 3,524
	Office & Technology	\$ 2,400
	Professional Development	\$ 8,563
	Director Salary/Fringe	\$ 36,933
	TOTAL	\$ 357,510
Other	Donations, Grants, Fees	\$ 39,375
	TOTAL	\$ 39,375
TOTAL EXTENSION FUNDING		\$ 728,071



Staff Members



Mary Pardee
Area Extension Director ~ Area 1
mary.pardee@wisc.edu
715-553-3044

Educators



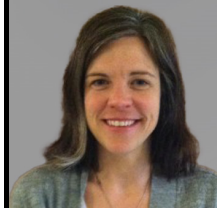
Stephanie Bakker
FoodWise Coordinator Ashland,
Bayfield & Iron Counties
stephanie.bakker@wisc.edu
715-373-3294



Marisa Perlberg
FoodWise Educator
marisa.perlberg@wisc.edu
715-682-7017



Tracy Henegar
Human Development & Relationships
tracy.henegar@wisc.edu
715-395-1426



Heidi Ungrodt
Human Development & Relationships
heidi.ungrodt@wisc.edu
715-373-3288



Ian Meeker
4-H & Youth Development
ian.meeker@wisc.edu
715-373-3289



Kaylie Lukas
4-H Operations &
Communications Specialist
kaylie.lukas@wisc.edu
715-373-3287



Kellie Pederson
Community Development
kellie.pederson@wisc.edu
715-373-3290



Kelly Westlund
Housing Educator
kelly.westlund@wisc.edu
715-373-3286



Jason Fischbach
Emerging Crops Specialist
jason.fischbach@wisc.edu
715-373-3291



Theresa LaChappelle
Office Manager
theresa.lachappelle@wisc.edu
theresa.lachappelle@bayfieldcounty.wi.gov
715-373-3285

Ryan "Spunki" Jansen
Ag Research Assistant

—Superior Adventures Leaders
Kaylie Lukas
Sean Meeker



Committee Members



Jeff Silbert
Chair
jeff.silbert@bayfieldcounty.wi.gov
District #6 - City of Washburn,
Wards 1, 2, & 4



Steve Sandstrom
Vice Chair
steve.sandstrom@bayfieldcounty.wi.gov
District #1 & 2 – Town of Russell



Larry Fickbohm
larry.fickbohm@bayfieldcounty.wi.gov
District #3- Towns of Bell, Clover,
Orienta, and Port Wing



Fred Strand
fred.strand@bayfieldcounty.wi.gov
District #8 - Towns of Hughes, Oulu, and
Tripp



Madelaine Rekemeyer
madelaine.rekemeyer@bayfieldcounty.wi.gov
District # 11 – Towns of Grand View,
Kelly and Mason



Office Manager – Theresa LaChappelle

Office Operations

Theresa LaChappelle remains in her role as Office Manager and serves as the first point of contact with the public. She continues to meet the challenges of this role, as she answers and directs phone calls, greets visitors, provides information and resources, sends off soil, forage & insect samples, and interacts with other Extension Staff, other County employees and residents of the area on a daily basis.

LaChappelle also assists with the coordination of the bi-monthly Extension Committee meetings. This includes assisting with the preparation of the materials for the meetings, sending out meeting notices, and the setting up of and hosting the virtual meetings on MS Teams. She also attends, participates in, and records the minutes of the meetings.

Financial Operations

The Office Manager maintained the office accounting. Record keeping was kept for grants, special projects and workshops. These records included spreadsheets, vouchers, and invoices. LaChappelle also maintained all receipt collections, deposits, invoices and bill paying. LaChappelle serves as a liaison to the Bayfield County Clerk’s Office and the County Auditors, and also creates financial reports for the Bayfield County Extension Committee.

Online registrations with credit card payments were again being offered to our citizens, some of these transactions include registrations and payments for 4-H CANSKI, 4-H Summer Camp and Co-Parenting classes.

Office Manager continued on back page

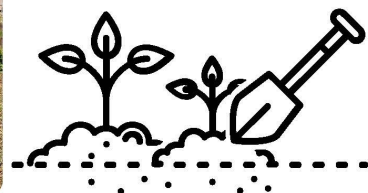
Inspiring Collaborations

To help combat food insecurity and create an educational garden space, in 2023, we collaborated with Red Cliff Boys and Girls Club, and Red Cliff Farm, worked together to improve a **garden space at the Red Cliff Boys and Girls Club**.

Enhancements to this space included:

- Clearing space around beds
- Improving raised bed structures
- Tilling a new ground garden space
- Adding new soil
- Plants and seeds
- Purchasing new tools and equipment
- Enhancing aesthetics with painted rock décor

We also supported an educational series called **Garden Club** where youth learned how to help take care of the garden and sampled healthy garden produce recipes.



Multi-level Program Efforts

A multi-level program effort that our team supported this past year was **“Moving Through the Seasons.”** This programming **supports seasonal community movement events.**

The collaboration formed after Red Cliff Clinic received **Maternal and Child Health (MCH) grant funds.** Working together with our program and other tribal partners, we put together a winter wellness event at the Red Cliff Boys and Girls Club. This event centered around the theme of being active outdoors in the winter. Snowshoes were even given out to participants. The success of the winter event led to partners of this group coming together to offer seasonal events for the community that focus on being active.

The four seasonal events included:

Winter - Winter Wellness Snowshoe Event
Spring - Color Run
Summer - Bike Rodeo
Fall - Harvest Theme

We will continue to support community events focusing on being active in 2024!

Connect With Us

Bayfield.Extension.wisc.edu
Bayfield County Courthouse
2nd Floor
117 East 5th Street
Washburn, WI 54891



Stephanie Bakker
Nutrition Coordinator



Marisa Perlberg
Nutrition Educator



Deb Leonard
Nutrition Educator

FoodWise education is funded by the USDA Supplemental Nutrition Assistance Program – SNAP and Expanded Food and Nutrition Education Program – EFNEP. An EEO/AA employer, University of Wisconsin-Madison Division of Extension provides equal opportunities in employment and programming, including Title VI, Title IX, the Americans with Disabilities Act (ADA) and Section 504 of the Rehabilitation Act.



Healthy Choices Healthy Lives

FoodWise is federally funded by the Supplemental Nutrition Assistance Program-Education (SNAP-Ed) and the Expanded Food and Nutrition Education Program (EFNEP). With local strengths, we support healthy eating habits, active lifestyles, and healthy community environments for Wisconsin residents experiencing limited incomes through nutrition education at the individual, community, and systems levels.



Bayfield County Landscape

Whether people are healthy or not is affected by systems, policies, and environmental factors.

10%

of county residents experience limited income and low access to a grocery store.[^]



10%

of county residents use SNAP benefits to purchase food for themselves and their families.*



[^]County Health Rankings
* WI Dept of Administration and WI Dept of Health Services

Achieving More Together

UW-Madison Division of Extension works alongside the people of Wisconsin throughout urban and rural communities to deliver practical educational programs where people live and work. In Bayfield County, FoodWise partners with schools, after-school programs, Head Start programs, and food pantries to help make the healthy choice the easy choice in our communities.

Community Impacts in 2023

Collaborated with two other FoodWise teams to provide three virtual StrongBodies strength training series over Zoom.

Our team continues to create a monthly newsletter and distribute to partners with information on food security resources, Harvest of the Month content, recipes, and more!



Congratulations to Marisa for receiving the 2023 FoodWise Community Engagement Golden Award!





Extension

UNIVERSITY OF WISCONSIN-MADISON
BAYFIELD COUNTY



Human Development & Relationships—

Tracy Henegar & Heidi Ungrodt

Family Engagement & Relationships Programs

Virtual and in-person programs give families and the professionals who serve them opportunities to gather for research-based information about parenting and relationships.



Triple P is an evidence-based parenting program that gives parents simple and practical strategies to help build healthy relationships, confidently manage children's behavior and prevent problems from

developing. In 2023, statewide collaboration expanded local access to over 60 sessions of Triple P, including classes specifically for families with children 0–12, families with teens, families with children with disabilities and families experiencing divorce or separation.

The Whole Brain Child class series was developed in Bayfield County in 2023 for local parents. Based on The Whole Brain Child book and workbook, this virtual series included 5 sessions for parents to learn the science behind their child's developing mind and share ways to survive the everyday struggles that accompany each stage of growth.



Parents Forever is offered on an ongoing basis in Bayfield County for separating or divorcing parents. This evidence-based program helps co-parents learn skills to

improve communication and problem solving, support children emotionally and keep kids out of the middle of conflict. In 2023, we returned to in-person offerings, while continuing to reach most families virtually.



Trauma-Informed Caregiving is a research-based program that brings together birth parents, foster parents, kinship providers and family-serving professionals. In 8 weekly

sessions, participants learn about the effects of trauma on the developing brains and bodies of children and explore ways to promote support and healing. In 2023, we offered this program virtually to local and statewide participants.

The Literacy Link works with local partners to foster positive, literacy focused interactions between children and their justice-involved parent. In 2023 in Bayfield County, 20 parents participated in a workshop on the importance of reading aloud to children. Following the workshop, parents had the monthly opportunity to create video recordings reading storybooks, which are then shared with their children at home. In 2023, 18 parents created over 60 videos, which were mailed to 25 children.



In 2023, Ungrodt worked with two Literacy Link colleagues to develop a literacy-enhanced version of Parenting Inside Out (PIO), which is a national evidence-based program for parents involved in the criminal-legal system. In the fall of 2023, Ungrodt taught a ten-session pilot of Parenting Inside Out—Literacy Link for ten fathers at the Bayfield County Jail. The revised version of the program has a family literacy component and incorporates family outreach. Elements include:

- Information on the importance of reading to young children and time for practicing reading aloud. Each session, a volunteer reads a children's book related to the day's topic.
- Option for participants to mail home a package each week of the class, which contains one or more books we read in class, along with related print educational materials.
- Powerpoint and instructions for virtual class delivery.
- Trauma-informed language and practices.



The families of class participants receive a package each week of PIO, including the children's books and materials pictured above.



Health & Wellbeing

With mental health and substance use identified as two of the top health priorities for Bayfield County for 2021-23, this program area continues to be a significant focus of the Bayfield County Extension work.

Mental Health First Aid (MHFA) continues to be one of our most sought-after programs, with both in-person and virtual being significantly in demand and meeting unique needs. This full-day program teaches adults how to recognize and respond to someone experiencing a mental health or substance use challenge. In 2023, Henegar co-facilitated ten Adult MHFA workshops across the region (one in-person in Bayfield County; two virtual statewide) reaching 103 participants statewide, and 11 Youth MHFA workshops across the region (Four in-person in Bayfield County; one virtual statewide) reaching 163 participants statewide.

Additionally, based on new research indicating that teens are more likely to talk to their friends before adults, in 2023, Henegar successfully piloted the **teen MFHA** program in three area High Schools, reaching 380 students (125 in two Bayfield County schools.)

2023 Youth Wellness Leadership Summit took place at UW-Superior, with 76 regional middle school student leaders from seven area Middle Schools in attendance. This inaugural collaborative event was designed to foster conversations surrounding wellness, empowering the region's youth to take on leadership roles within their communities.



Student Pre- and Post-Evals

	PRE	POST
1. I know how to cope with stress in a healthy way.	30%	71%
2. I can identify when a relationship is healthy or unhealthy.	55%	67%
3. I know how to manage time to prevent stress.	29%	62%
4. I know how to identify when a peer is having a mental health challenge.	34%	58%
5. I know how to support a peer who is having a mental health challenge.	34%	61%
6. I know how to talk about my mental health with others.	28%	57%

Other 2023 programming to support positive mental health and wellbeing included:

- ◆ **WeCOPE** (Connecting with Our Positive Emotions) is a 6 session evidence-based program that helps adults to cope with stress—43 virtual participants statewide.
- ◆ **QPR Gatekeeper Suicide Prevention** is an evidence-based workshop focused on three simple steps to save a life from suicide—Question, Persuade, and Refer. Twenty-one sessions reached 313 participants, including five virtual sessions reaching 43 participants across the northland.

LifeSpan

LifeSpan programs help individuals, families and communities transition through the aging process by providing programming, resources and support on topics such as family caregiving, healthy aging and creating aging-friendly communities.



Ageing Mastery Program
National Council on Aging

The **Ageing Mastery Program** is a 12-session series for seniors to develop sustainable behaviors across many dimensions that have been shown to lead to improved health, stronger economic security, enhanced well-being, and increased societal participation. In 2023, through a partnership with Inclusa Managed Care, we piloted a blended program, hosting an in-person group at the Northern Great Lakes Visitor Center with virtual instruction from professionals from all across the state, reaching eleven in-person participants and one virtual participant.



Youth Development and 4-H— Ian Meeker & Kaylie Lukas

The Extension Institute of Positive Youth Development prepares the youth of today to become the effective, empathetic adults of tomorrow. Our research-based youth enrichment programs build youth and adult capacity and partnerships that help both sides grow. 4-H clubs, camps and out of school time programs give young people the hands-on experiences they need to develop an understanding of themselves and the world.

Superior Adventures Engages Youth in Experiences that Last a Lifetime

Superior Adventures provides outdoor adventure trips for youth to explore wilderness locations in our region. Research confirms that exposure to nature through Outdoor Adventures develops confidence, improves communication, builds cooperation and belonging and is universally engaging.

In 2023, the Superior Adventures program provided 23 separate program days (each program lasts between 4-8 hours) and served over 220 youth. To increase youth participation Superior Adventures continued collaborating with classroom teachers to organize and lead field trips during the school day, Superior Adventures collaborated with the Washburn, Bayfield, South Shore and Drummond School Districts to provide place-based educational programming during May and September.

To expand this programming, Superior Adventures also co-designed summer school adventure weeks with South Shore and Washburn school districts. These programs provided five straight program days which featured canoeing, kayaking, biking and hiking. Having the same group for consecutive days allowed youth participants to develop a sense of mastery of how to confidently paddle a canoe through currents and the communication it takes to successfully descend with a partner through a set of rapids.

After two days on the Brule River, participants transferred their experience into paddling tandem kayaks on Lake Superior. Whether in a canoe or kayak, movement on water requires the learner to pay attention to forces like



current and wind. These experiences also provide immediate feedback and help to develop an important life skill: “Are you going in the right direction and if you are not, how can you work together to improve the situation.”

During these experiences, adult leaders are able to teach the observational skills to successfully navigate potential hazards like rapids, wind, weather and terrain which develops judgement related to safe risk taking.

These adventures heighten participants’ sense of place and increase their appreciation for where they live. These experiences also develop key attributes of the 4-H Thriving Model such as Belonging, Positive Relationships with a Caring Adult, Engagement in Learning, Growth Mindset and an Openness to Challenge and Discovery.

Superior Adventures is a working checklist for each one of these positive experiences.

“Superior Adventures allowed my students to learn new skills on the water, and to take a step outside of their comfort zone and into zone of growth and adventure. The water was their teacher, and they learned both hard skills such as paddling and boat management and soft skills such as communication, decision making, and conflict resolution. After a week with this program my students shared their new found confidence in themselves, their friendships, and their love of paddling on our unique waters.”

Middle School science teacher reflecting on summer school Adventure Week



4-H Camp Counselors Build Leadership Skills, Help Kids Celebrate Summer and Have Fun



In 2023, 10 of the 14 4-H camp counselors were previous 4-H campers. This continuity reflects the unique experience of 4-H Camp and helps to pass on the rich traditions of 4-H Camp.

The 4-H Camp Counselor experience continues to be a premier leadership experience that demonstrates how effective training prepares counselors to assume responsibility and to create a caring and supportive environment. In 2023, 14 local high school counselors were trained to facilitate a 3-day and 2-night 4-H Summer Camp. This experience is the highlight of many 4-H Campers summer and helps to develop the Essential Elements of **Belonging, Independence Mastery, and Generosity**. 4-H Summer Camp is a collaboration between Bayfield and Ashland Counties and was attended by 56 campers in grades 3-8.

Superior Days Builds Youth Adult Partnerships

Engaging youth in real governance experiences develops critical thinking, communication, problem solving and recognizes the importance of active citizenship. To document the profound impact of this experience, Meeker collaborated with Iron and Ashland County colleagues Neil Klemme and Doug Liphart (retired) to implement a qualitative and quantitative evaluative assessment of the Youth Delegate experience at Superior Days. The results of this research led to publishing of a featured article in *The Journal of Youth Development: [Civic Engagement and Advocacy in Rural Wisconsin: Youth Development Through Legislative Forums](#)*. This paper demonstrated the positive impact of inter generational civic engagement has on both youth and adults delegates. In 2023, the five Bayfield County youth delegates did an excellent job representing Bayfield County.



Wild Ricing Collaborative with Bayfield High School

For the third year in a row, Ian Meeker collaborated with staff from Bayfield High School and the National Park Service to teach students and staff the traditional skill of harvesting Manoomin (Wild Rice).



In 2023, 39 students and 14 adults learned to harvest Manoomin from canoes on four separate days. This experience included hands on instruction from tribal elders of the Red Cliff Band of Lake Superior Chippewa.

Through this experience, students learned the significance to the Ojibwe culture of giving thanks for the opportunity to harvest the Manoomin, the food that grows on the water. The harvest was processed and gifted to tribal elders, utilized for a Community Manoomin Fest held at the Bayfield School.





Agriculture—Emerging Crops—Jason Fischbach

Jason Fischbach is the UW-Extension Emerging Crops Outreach Specialist since July 2021. The position is statewide, but is housed in Bayfield County. Much of Jason’s work happens in Bayfield County with local farmers and businesses.



For general agricultural or horticulture questions, citizens are invited to utilize online Extension resources, including:

- ✂ Information/videos by topics can be found at:
<https://extension.wisc.edu/agriculture/>
- ✂ Ask An Agriculture Question at:
<https://extension.wisc.edu/agriculture/ask-an-agriculture-question/>
- ✂ Ask Your Gardening Question at:
<https://hort.extension.wisc.edu/ask-a-gardening-question/>



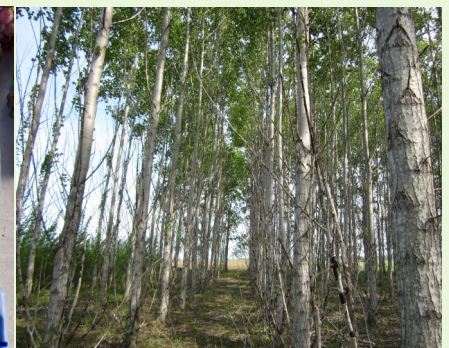
Honeyberries Are Coming!

A new crop getting a lot of attention these days is honeyberry, aka haskaps. They taste great and offer an early harvest that can help diversify pick-your-own operations, such as we have in Bayfield. A new grant we received will allow us to put in a variety trial to evaluate some exciting new varieties. Establishment will begin in spring 2024 and we expect a first crop in 2025. Stay tuned for a testing event.

The Research Continues

2023 was a busy year for new crop research here in Bayfield County. This was the second year of our seedless table grape trials with a location in Bayfield and a second in Mason. We expect our first harvest in 2024.

Jason has been helping breed and evaluate hybrid poplar since 2010 and last year saw the first commercial release from that work, InnovaTree. Work is now underway to establish yield block trials with the top 10 selections. Stay tuned!



The Emerging Crops Accelerator aims to strengthen the vitality and resilience of Wisconsin agriculture through the development of new crops, new products, and new markets.

www.emergingcropswi.org



What's Happening with the Hazelnut Project?

Way back in 2007 we launched the Upper Midwest Hazelnut Development Initiative to bring the first ever nut crop to Wisconsin. Bayfield County is front and center in the development efforts. Creating a new crop and a new industry takes a long time, but it's worth it.

The high value crop can net \$3000/acre for farmers and more if farmers add value and sell direct to consumers. It is both climate resilient and effective at sequestering carbon in its root system, a benefit that aligns well with Bayfield County's efforts to become carbon neutral. Below are just some of the things happening here in far Northern Wisconsin to develop this exciting new crop.

Hazelnut Processing.

The first and only commercial hazelnut processing line is at Northland College in Ashland. Last year we processed nearly 12,000 lbs. of nuts from 24 different growers. This is a huge resource for our region!



Hazelnut Breeding.

Breeding plots here in Bayfield County helped us find and evaluate the first ever hazelnut cultivars developed for Wisconsin. Excellent flavor, high yields, and disease and cold-resistance means we can now grow hazelnut commercially.



Hazelnut Nurseries.

We estimate a need for nine million hazelnut plants over the next five years. Fischbach has been working with a local nursery to develop propagation protocols to start getting plants out to growers.



Go-First Farms.

Hazelnut are a new crop, which means many farmers will be hesitant to try them until somebody else shows it can be done. To that end, we are establishing a network of Go-First Farms and the second of these farms is at our very own Bayfield Business Park. Now at five acres, it is blazing the trail for others to follow.



Community Development—Kellie Pederson & Kelly Westlund

The Community Development Program provides educational programming to assist leaders, communities, and organizations to realize their fullest potential and build the vitality that enhances quality of life for residents. We educate in organizational development, leadership development, food systems, community economic development, and local government process. In short, the Community Development Program plants and cultivates the seeds for thriving communities and organizations.

Increasing the Availability of Attainable Housing



New Housing Outreach Specialist Position in 2023!

Kelly Westlund joins the Extension team in 2023 as the Housing Outreach Specialist, with a focus on implementing housing programs and collaborations that have been developed in the past years and working with communities to develop new and innovative strategies to support the development of affordable housing.

This position is a result of a unique partnership between UW-Madison Extension and Bayfield County to better address regional housing needs. Funded through 2026, this pilot position has significantly increased Bayfield County’s capacity to build a more effective response to the regional housing crisis.

CheqBUILT

In 2023, as a result of the region’s participation in Wisconsin Housing and Economic Development Authority’s (WHEDA) Rural Affordable Workforce Housing Initiative, funding was received to develop the organizational infrastructure of the **Chequamegon Bay United Impact Land Trust**, also known as CheqBUILT. CheqBUILT will be the area’s first Community Land Trust and will provide an organizational framework for developing and preserving the regional supply of permanently affordable homes to support the area’s essential workforce. For more information: www.cheqbuilt.org



Chequamegon Bay Regional Housing Coalition

Since 2019, Extension has acted as the primary convener for the Chequamegon Bay Regional Housing Coalition. This group of municipal, tribal, county, and agency representatives, has been working diligently to research and develop a coordinated response to address the regional housing crisis.

This year, the Coalition became more formalized, with many entities signing on to the charter in affirmation of their

support for collaborative work toward addressing the regional housing shortage. In addition to local units of government, the Coalition now includes local nonprofit organizations, housing authorities, economic development corporations, and Bay Area Rural transit, among others.



County-led Affordable Housing Development in Washburn

In 2023, Extension continues to work in partnership with the Bayfield County Administrator’s Office, the City of Washburn, and Cinnaire Solutions to support a robust application for WHEDA funding to build a 40-unit housing development on County-owned property within the City of Washburn. The funding announcement will take place in spring of 2024, with hopes of construction to begin in 2025.

Rural Housing Readiness



This process has been used in several communities throughout Bayfield County, with the most substantial progress in the Towns of Bell and Iron River. Based on a community-driven model developed in Iowa, local stakeholders were asked to gather some information: opportunities and barriers related to new housing development at the local level, the populations they wish to serve, the number of new units required to meet the need, and an inventory of suitable parcels in close proximity to existing infrastructure and daily living amenities. This information will be used to develop a Request for Proposals (RFP) that can be put out for bids. By gathering this information through local stakeholders, the community is more engaged early on, and thus more likely to be supportive of new housing development as projects progress.



Pro-housing Investments

In addition to extending the Housing Outreach Specialist position through 2026, the Bayfield County Board made a three-year funding commitment to increase staffing at the Bayfield County Housing Authority



Increasing the Availability of Attainable Housing *(continued)*



Pro-housing Investments-continued

for the first time. Their \$30,000 investment each year (a total of \$90,000) is being used to increase a part-time position to full-time, freeing existing staff to pursue additional resources. In 2023, that \$30,000 investment was used to leverage two grants totaling \$84,000 for necessary rehab of their existing housing stock.

The County Board also allocated \$4,000 to raise awareness of existing programs for home repairs and \$50,000 as a leverage match for grant funding to update the zoning ordinances in favor of increased housing density, reduced development costs, and shorter permitting timelines.

County Policy Changes



Bayfield County began the process of a comprehensive overhaul of zoning regulations, which will take place in 2024-25. In the short-term, there were some notable changes regarding the sale of tax-forfeiture properties. In 2023, two properties were sold with new deed restrictions that require a residential structure to be in use as a primary residence within two-years of purchase and prohibits the use of the structure as a short-term rental for a period of ten years. These policies are intended to promote timely renovation and year-round occupancy of existing housing stock.

2023 Highlights of Direct Service to Non-Profit and Public Organizations



Bayfield County Senior Care Cooperative

Provides backbone organizational support to an emerging coalition focused on building a Senior Care Cooperative that will increase well-being for community elders in need of personal care and other in-home services.

Work with the coalition to complete a market study for the project with consultants from the ICA Group, a national leader in homecare cooperative development. The study noted a significant need in the region and very favorable conditions for co-op start-up.

Identify funding source for next phase of organizational development and contracted for services to complete a feasibility analysis that will help identify parameters for long-term sustainability and success of the project. The study will be complete in 2024, with hopes of an operational organization by 2025.

Bayfield County Comprehensive Planning Committee



Served as a member of the Bayfield County Comprehensive Planning Committee through its year-long effort to provide a proactive blueprint for development of Bayfield County.

- Chair the Housing Work Group
- Participate in the Economic Development Work Group
- Support development robust opportunities for public engagement

Ashwabay Alliance



Provide support for the completion of a strategic merger between the Ashwabay Outdoor Educational Foundation and the Lake Superior Big Top Chautauqua.

Build organizational capacity and support organizational development in order to form one organization better positioned to serve the region as a local recreational hub and tourism destination. Provide direct service to the newly merged organization as a Secretary to the Board of Directors.

Support the process for hiring an Executive Director for the newly merged organization. This work is ongoing and will be completed in Spring of 2024



Red Cliff Business Development Corporation (RCBDC)

Completed direct service to the organization as a member of the Board of Directors in Summer of 2023.

In 2023 the RCBDC worked to:

- Maintain organizational consistency through staff and board transitions
- Professionalize operations through the initiation of routine financial audits and the development of policies and procedures for RCBDC and its subsidiary business endeavors



2023 Highlights of Direct Service to Non-Profit and Public Organizations *(continued)*



Washburn Bike Park Steering Committee

- Provide backbone support and facilitation to organize an ad hoc community group working to develop a Bike Park in the City of Washburn.
- Build organizational capacity with the Bike Park Steering Committee in order to support a more effective partnership with the City.
- Provide coordination and support for the Bike Park concept design process with International Mountain Biking Association, the City of Washburn and the Bike Park Steering Committee.
- This work is ongoing. Planning process is anticipated to continue through 2024.



Ashland County Criminal Justice Coordination Council

- Provided facilitation for a complete strategic planning process with the CJCC
- Provided ongoing support and consultation for the program coordinator through early implementation of strategic actions.

Student Pathways to Adventure, Resilience and Knowledge (SPARK)



- Provided facilitation for an updated strategic planning process with the Ashland County SPARK Team

Office Manager—continued Educational Outreach

Within the purview of the Office Manager is educational outreach. Some of the ways that LaChappelle has handled these responsibilities have included:

- ◆ **“Caregiver and Family News: Living Well in Our Best Years” Newsletter**—Creating the layout for the collaborative newsletters between the UW-Madison Division of Extension Bayfield County Office and the Bayfield County Human Services Aging and Disability Resource Office. Three times a year these newsletters reach out to local seniors, caregivers, and their families with pertinent information regarding many facets of their lives. Past issues of the newsletter are available on our website <https://bayfield.extension.wisc.edu/family-living/aging-and-caregiving/>



- ◆ **Website and Social Media presence**—Creating content, posting and updating the websites and social media sites with timely materials and new educational offerings.

- ◆ **Parenting Newsletters**—Handling the preparation and sending out of the monthly “Just In Time” (JIT) Parenting Newsletter to the Bayfield County parents of children ages newborn to one-year-old, and the “JIT” bi-monthly newsletters for two to five-year olds.

Also ensuring that the “Parenting the Preschooler” and “Money Smart for Head Start” went out to the contacts at the Washburn Early Childhood Center and the Red Cliff Early Childhood Center on a monthly basis while their classrooms were in session.

“Bringing the resources of the University of Wisconsin to Bayfield County.”

