



4-H Family Newsletter



Cooperative Extension University of Wisconsin-Extension

P.O. Box 218, Courthouse, Washburn, Wisconsin 54891

Phone (715) 373-6104 FAX (715) 373-6304

TDD: 711 for Wisconsin Relay

November—December 2018

Dear 4-H Families:

Now that you have enrolled for the 2018-19 4-H year, you may be asking the question ***“Now what do I do?”*** The answer varies depending on your role in the 4-H program.

For Project Leaders: You should start by setting a date for your first project meeting. 4-H Project Leaders should plan on leading 4-6 project meetings. You can ask either your club organizational leader or the 4-H office for a list of members enrolled in the project and communicate to them the meeting date, time and place. 4-H project literature to support your work is available free of charge from the UW Extension office. There is also a vast network of resources available on the Internet, as well as our public libraries. If you would like help printing resources online or have any project related questions, contact either Ian or Donna at the 4-H office. We are also your link to the greater University System and in many cases there are resources available beyond 4-H literature like videos and lesson plans.

If you find educational material from books or the internet that you would like to use for your project meeting, we can print these materials at the 4-H office.

4-H Members and Parents: Do you know the name of the 4-H project leader for the projects your son or daughter has enrolled in? If not, ask your club leader and if there is not a project leader for a project they enrolled in, call Ian or Donna in the Extension office and we can help you determine if a neighboring club has a project leader that has room for you to participate in their meetings. If there are no project leaders available, think about someone in the community that has skill or experience in this area and ask them if they would consider becoming a 4-H Project Leader. Adults in the community do not have to be certified 4-H project leaders if there is a certified 4-H project leader present at the project meetings.

Wishing you and your family a wonderful holiday season,

Ian Meeker
4-H & Youth Development Educator
Bayfield County
ian.meeker@ces.uwex.edu

Donna Ganson
4-H Program Assistant
Bayfield County
donna.ganson@ces.uwex.edu

“Success in 4-H is like a bank account. What you get out of it is directly related to the work you put into it.”

DECEMBER 2017

Sun	Mon	Tue	Wed	Thu	Fri	Sat
Nov 25	Nov 26	Nov 27	Nov 28	Nov 29 HS/MS CAN- SKI Gear Checkout	30 Equine Council meeting	1
2 4H Market Sale Meeting	3	4	5	6	7	8
9	10 Superior Days meeting	11	12	13	14	15
16	17	18	19	20	21	22
23	24 ← Courthouse Closed →	25	26	27 CANSKI HS Race camp	28 CANSKI Race Sponsor	29 CANSKI Race Hayward
30	31 ← Courthouse Closed →					

JANUARY 2018

Sun	Mon	Tue	Wed	Thu	Fri	Sat
	Dec 31 ← Courthouse Closed →	1	2	3	4	5
6	7	8 Element- ary/ Adult CANSKI Gear Check- out	9	10 MS/HS CANSKI Rec Skiing begins	11 Elem & Adult CAN- SKI Rec Skiing begins	12
13	14	15	16	17	18 ← Winter Camp →	19
20 Winter Camp →	21 4-H Leaders As- soc. Meeting	22	23	24	25	26 Free Community Ski Clinic
27	28	29	30	31		

December

2.....Market Sale Meeting, Eileen Town Hall
6:30 pm ~ **ATTENDANCE IS REQUIRED**
AND A PARENT NEEDS TO BE PRESENT.
Please check to ensure you are signed up
for Market Sale on 4-H ONLINE!!

10.....Superior Days Meeting 5:45 Courthouse

24—25...Courthouse Closed

31..... Courthouse Closed

January

1..... Courthouse Closed

8..... CANSKI—**Elementary & Adult Gear
Checkout** - Ashland Elementary
School Commons, 5:30-7pm **(this is
the final gear checkout)**

10..... CANSKI MS/HS Recreational skiing
begins—4 pm—Ashland MMC Trails

11..... CANSKI Elementary & Adult Recrea-
tional skiing begins— MMC Trails or
Lake Superior View Golf Course

18-20 .. 4-H WINTERCAMP, Delta WI

21..... 4-H Leaders Association Meeting,
Eileen Town Hall (AERC), 7 pm

26..... 4-H CANSKI Free Community Ski
Clinic

Keep In Touch!

Surface mail, email or phone calls are all good
ways to contact us. We look forward to hear-
ing from you!

When you call our office at 373-6104 you will
hear a recorded message and can reach our
extensions as follows:

Ian Meeker ~ Ext. 3
ian.meeker@ces.uwex.edu

Donna Ganson ~ Ext. 4
donna.ganson@ces.uwex.edu

Theresa LaChappelle ~ Ext. 0
theresa.lachappelle@ces.uwex.edu

Congratulations to all newly elected 4-H Club Officers!

Secretaries and Reporters: After you've taken your club's meeting minutes and notes, don't forget to send them to the 4-H office so we can publish your club news in the 4-H Newsletter.

We welcome pictures and stories at any time, but due by the 10th of the month the newsletter is published. Newsletters are published in the months of:

● January ● March ● May ● September ● November.

4-H Awards and Recognition Dinner

October 27th at the Northern Great Lakes Visitor Center

We had a great turnout for the Awards Dinner. Special thanks to the Northern Great Lakes Visitor Center for use of the facility and to center shepherd Donny Ekholm for setting everything up so nicely for us. Thanks also to members of the Friendly Valley and Whittlesey Creek clubs who coordinated the food, decorations, setup, and cleanup. Special thanks to Pat & Emmer Shields for cleaning up while we enjoyed the program, and to Glory Bizub for coordinating the silent auction. It was a big effort and wonderful celebration of the people and spirit that make Bayfield County 4H the strong and enduring community youth program that it is.



Meet Your New Ambassadors



Hey! I'm Victor Hart, a freshman from Washburn High School. I am part of the 4-H CANSKI Club. CANSKI is a nordic skiing-specific 4-H club that has a different operation model from the clubs in the county. Some of my favorite 4-H activities include Nordic skiing and the 4-H summer camp. I also enjoy alpine skiing, soccer, and cross-country running. I am looking forward to Winter Camp, counseling Summer Camp, and attending the State 4-H Youth Conference in Madison.



Hi. I'm Brielle Mesik. I'm in the 8th grade at Ashland Middle School. I'm currently the Club President of the Pine Creek 4-H Club and the Club Secretary for the Market Sale. I've been involved in 4-H for almost 8 years. My favorite projects are Market Sale, Beef, Goats and Photography. This year I was selected as an Ambassador and received the Young Leadership Award. Outside of 4-H, I'm involved in dance, volleyball and softball. I'm looking forward to attending Winter Camp, 4-H Youth Conference, some Adventure trips and hopefully being a CIT at 4-H camp.



Hello, my name is Promise Kreinbring, I am in eighth grade at Our Lady of the Lake School in Ashland. I am an active member of the Whittlesey Creek 4-H Club and am currently serving my second term as club president. I have been a part of 4-H for 8 years, 3 as a Cloverbud and 5 as a regular 4-H member. Some of my favorite projects are: Photography, Drawing and Painting, Model Horse, Ceramics, Youth Leadership and Horse. I enjoy being active out doors in the summer riding horses and biking. In the cold months I play basketball, volleyball and love curling up with a good book under a warm blanket. This coming year I am looking forward to being more active in the county as a 4-H Ambassador and am excited to try being a Cloverbud judge, Camp Jr. Counselor, and continued participation in the Bayfield County Equine Council. I am especially excited for the opportunity to attend Winter Camp for the first time as well as several 4-H Adventure Trips.



Hi, I'm Nicholas Pully. I'm 13 years old and an 8th grader at Ashland Middle school. I'm a member of the Whittlesey Creek club where I am the newly elected secretary. I enjoy playing video games and hanging out with my friends and family. In 4H my main interests are raising and showing club lambs, showing rabbits, and building my computer from scratch. I'm grateful and excited about being an ambassador for the Bayfield County 4H program.



Hi, I am Paige Tuura from the Gitche Gume 4-H club and I am excited to be an ambassador this year.

I currently attend Northwestern Middle School where I am in 9th grade. At school I participate in Drama Club. I enjoyed being a Tiger Mascot during my brothers 5th grade football games this fall.

I am in a number of projects in 4-H. Some of them are Foods and Nutrition, clothing, Home Environment, and Drawing and Painting. I love to draw in my spare time and would love to be an author someday. I am looking forward to all the events in 4-H, already attending Fall Forum which was so fun! I look forward to what this year will bring!

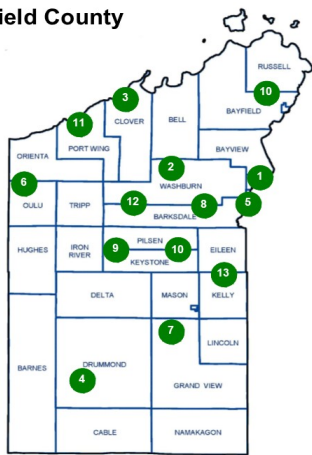
Returning Ambassadors and years of service:

Sophya Zangri~2 years, Drew Tuttle~3 years, McKenzie Tuura~3 years, Evelyn Sanda~3 years, Seth Johnson~3 years, and Aaron Folsom~3 years

Club Corner

**Township Map of Bayfield County
4-H Clubs**

1. Ashwabay
2. CANSKI
3. Clover Valley
4. Drummond Explorers
5. Friendly Valley
6. Gitche Gumee
7. Great Divide
8. Hillcrest/Mt. Valley
9. Ino Valley
10. Pine Creek
11. Whispering Pines
12. Whittlesey Creek
13. Woodland Workers



Ino Valley 4-H Club

The Ino Valley 4-H October meeting was called to order by president Hannah Galligan. Secretary and treasures report read and approved.

Up coming events are the WhistleStop water and snack station by Ino. Times to be there were discussed, Mellissa, Tim, and Josie Netz will pick up the supplies.

Sunday is the Mason Ambulance dinner at the Benoit CC. Members signed up to help clean tables and serve coffee. This is one of our service activities for the community.

We then discussed the Halloween Party on October 26. We will have a meeting on Monday at 6:00 PM at Glory's to finish the games, foods and prizes. Jessica is ordering the prizes. Donations are being collected for the silent auction table

The Awards and Recognition Dinner is on October 27 at the NGLVC. Call in if planning to go.

Next meeting TBD, in November. Be sure to enroll for next year 2018-2019.

Sincerely submitted, Meghan Kurilla

Great Divide 4-H Club

On October 12th, the Great Divide 4-H Club assisted the Ino Valley 4-H Club with handing out water and treats to the runners at Whistlestop. The weather was perfect and the 4-Hers were wonderful helpers!

On Saturday, October 20th, Great Divide held their annual Fall Festival Craft Day and Intro to 4-H for all interested parties. Flyers were distributed at the Drummond School and the turnout was great! The kids decorated gourds and built a scarecrow, and several new participants joined 4-H.

On November 6th, they held their elections during their meeting. Congratulations to the following members: Breanna Kinnunen, President; Emily Kinnunen, Vice President; Beyla Wallin, Co-Vice President; Secretary, Paige Wachtler; Treasurer, Lexi Dryer; and the remaining children are combining forces as group photographers. During this meeting, children also got to make fridge magnets. On December 8th, from 11 a.m. to 2 p.m. at the Grand View Town Hall, the club will have a craft day where they tentatively plan to create festive slime, pinecone bird feeders, create holiday ornaments and decorate sugar cookies.

Special congratulations goes to Kya Eastham and Beyla Wallin for their outstanding record books! Keep up the good work!

(Club Corner continued on page # 6)

Gitche Gumee 4-H Club

A lot has been happening for the Gitche Gumee 4Hers.

Our September meeting brought the election of our new officers. Officers for the 2018-2019 year are: President Brendan Golly, Vice President Lucie Landwehr, Secretary Selah Swanson, Treasurer Natalie Golly and lastly our Reporter is Muree Ahlberg.

In October, we had our annual hayride around Oulu. After we the ride, we had goodies, hot chocolate and conversation. There was a great turn out and lots of fun had by all.

On October 26th, we held our 64th annual Halloween Carnival at the Workshop. Bingo, kids games, and a cake walk were just a few of the activities. A spooktacular time was had with a great turn out.

Our November meeting was held on November 7th, we are looking forward to the Christmas Season and plan to continue our annual Christmas Caroling in the Iron River and Oulu area.

Submitted by: Muree Ahlberg, Club Reporter

Friendly Valley 4-H Club

Favorite Family Meal Presentations

On November 12, the members of the friendly valley 4-H club shared their favorite family recipes. There were many different dishes, from homemade salsa, chicken pot pie, fried macaroni, and winter beans. My personal favorite dish was the homemade chicken pot pie. It was fun seeing and tasting what other people love to eat.

--submitted by Ayden Zifko

Club Corner—Continued

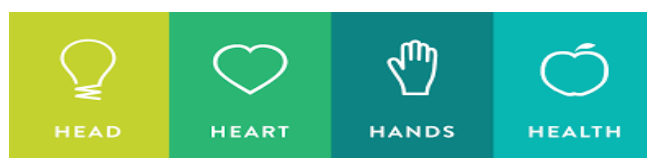


Gitche Gumee 4-H Club hay ride

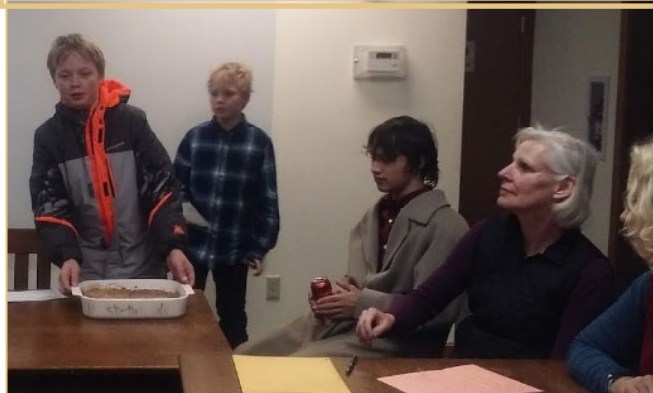


*Gitche Gumee
4-H Club*

Newly elected Gitche Gumee officers:
Muree Ahlberg, Natalie Golly, Brendan Golly, Lucie Landwehr and Selah Swanson



Friendly Valley 4-H Club



*Great Divide
4-H Club*

*Great Divide & Ino
Valley 4-H Clubs
helped out at a Whistle
Stop Water Station*



Friendly Valley 4-H Club Favorite Family Meal Presentations

Great Divide 4-H Club Fall Festival

4-H starts Bike Club to promote Active Outdoor Experiences

On a few occasions during the summer and on Monday's after school this fall a group of dedicated young riders explored the single track trails at Mt Ashwabay. Single track trails, in keeping with their name, are narrow trails (with plenty of room for a bike) that are creatively designed to take advantage of topography and flow through the woods. If you like to bike and like to explore new and exciting places in the woods, single track biking is something you should try. You should also know that the trails at Mt Ashwabay are part of a larger network of trails known locally as the CAMBA Trail system. Chequamegon Area Mountain Bike Association or CAMBA <https://www.cambatrails.org/> provide hundreds of miles of trails in Bayfield and northern Sawyer county. The bike club is an excellent way to take advantage of the unique area we live in as well as the Bayfield county van and dedicated trailer that can transport 14 bikes.



The crew takes a moment to celebrate their last ride of the season. From LtoR Calvin Weispfenning, Roland Weispfenning, Lisa Weispfenning, Sieanna Sandor, Gemma Sandor, Milek Stone and Taylor Major

Below is an update from Lisa Weispfenning, who is a leader for both the Ashwabay Bike club and 4-H CANSKI.

"Our last ride on the 5th of November was a memorable experience! We started out from the Whiting Road trailhead with a teeny bit of snow on the trail that we thought would melt as the day progressed. Well, we decided to ride the new Tsuga Daddy trail, which goes straight away from the lake and deep into the woods. It's a 6 mile loop from the start of the trail. As we biked along, the snow got deeper and the kids (and Mike and I) were slipping and sliding everywhere!



We didn't even make it 1.5 miles before we had to turn around and head back towards the trails that were closer to the lake, and therefore mostly free of snow. Everyone's feet got a little wet, but we kept moving and everyone seemed fine. After a little lunch we headed up to the top of Mt. Ashwabay for a view of Bayfield and the Islands. On our way down Trogdor we found a sheltered spot and had a little fire and roasted some marshmallows. When everyone started to get cold, we rode back down to the van and devoured a pan of Rice Krispy Bars that the Sandor family brought (thanks!).

I, for one, was very impressed with all of the kids' attitudes when out on the trail. Very courteous, helpful, happy, and ready to learn. No one got mad at anyone for going too slow in front of them, they just rode their bikes and had fun. "

The 4-H Potential Adventures program which will once again take place this summer and promote outdoor adventure opportunities for youth like biking, canoeing, kayaking and hiking. Look for registration information about the Potential Adventures Through 4-H in the 4-H Newsletter in April.. If you have questions or want more information about the 4-H Biking Club or Potential Adventures, call Ian at the 4-H office at 715-373-6104 ext 249.

Notes & More.....

Attention 4-H Club Treasurers & Leaders

As you are probably aware, keeping good club treasury records is more important than ever. You may have also discovered that it's much easier to keep an accurate, on-going record of income and payments than to try and recreate it later. To get off to a good start this year we strongly urge you to do the following:



Use the "Club Financial Records" forms found on our website at <http://bayfield.uwex.edu/4-h-youth-development/>. If you use the Excel document the math is done for you! Treasurers can type in and save this document to their own computers.

Start your records as of July 1, 2018.

July 1, 2018– June 30, 2019 is the period of activity that will need to be audited next year. We need to get in the habit of using these dates.

Treasurers need to work closely with an adult who can help them understand how to do their job and the importance of it to their club as a whole.

Remember that financial records tell a story about what your club values and supports. Add enough detail to the lines to explain where the money came from or why it was paid out. If money is paid to an individual, tell why (i.e. camp scholarship, reimbursement for supplies, etc.).

We know you are all good stewards of the money in your treasuries and keeping detailed records takes some work, but in the end, remember it teaches us all about handling money and being accountable, life lessons worth learning.

County Van Available for 4-H Programs

Bayfield County 4-H has access to an 12-passenger van. This van is available for club and project leaders once they have completed a short drivers certification program.



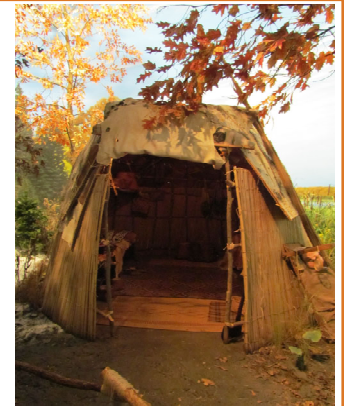
The process for using the van will include reserving the van at least a week in advance and having a driver available who has been certified by the county. This certification will cover defensive driving techniques, a background check on their driving record and a drive in the van.

If you foresee a way you can utilize this resource please call the office to arrange a training.

Dagwaagin — Fall

From Wisconsin Public Television and Wisconsin First Nations American Indian Studies

November is National Native American Heritage Month! You can explore Wisconsin's Native cultures and communities using the Wisconsin First Nations website. <https://wisconsinfirstnations.org>.



Whether you are a teacher, parent, or interested young person, this site has a wealth of resources to satisfy your curiosity about the first nations of Wisconsin.

Curious about how seasonal foods were gathered and enjoyed by the original people of this area? How is it similar to the way you and your family enjoy the harvest today?

Follow this link to see a short video from the Ojibwe Four Seasons Series called **Fall-Dagwaagin**. <https://wpteducation.org/series/episode/fall-dagwaagin>

We'd be interested to know what you think!



Notes & More.....

Pumpkin & Sunflower Contest

GIANT Pumpkin Growing Contest Winners

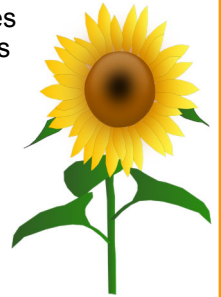
Grades K-2.....	Olivia Pope.....	128 lbs.
Grades 3 thru 5.....	Lexi Dryer	138 lbs.
Grades 6 thru 9.....	Maggie Ostrenga.....	133 lbs.
Adults.....	Mike Ostrenga.....	120 lbs.



GIANT Sunflower Growing Contest Winners

Tallest

Grades K-2.....	Brinley Martinson.....	11 feet, 8.5 inches
Grades 3 thru 5.....	Beau Mesik.....	12 feet, 10 inches
Grades 6 thru 9.....	Brielle Mesik	12 feet, 0 inches
Adult	Caloney Mesik.....	10 feet, 8 inches



Largest Head

Grades K-2.....	Riley Gibbs.....	14 inches
Grades 3 thru 5.....	Beau Mesik	11.5 inches
Grades 6 thru 9.....	Brielle Mesik.....	12.5 inches



Ceramics Classes Offered

Ceramic classes will be held at Glory Bizub's ceramics studio; 20020 US Hwy 2, Ashland.

All supplies are available for purchase onsite from Glory.

There are 10+ different categories; whatever pieces are selected, will be slotted into different categories for the fair.

When more than one item is done in a single category, the member picks their best piece to enter. How many items made is up to the member; one or two will give a good start into the world of the ceramics project.

Any questions, call Glory Bizub at 715-746-2311.



important stuff

TO DO LIST:

- ☐ cash check from the
- ☐ Bayfield Co. Fair
- ☐
- ☐
- ☐
- ☐
- ☐
- ☐

x x x x x

PRIORITIES:

Premium Check
from the Fair

NOTES:

Cash check (no
matter how small)
to avoid pesky
calls from Fair
office :)

x x x

Bayfield County 4-H Older Member Awards

Congratulations to these 4-H members who participated in the Older Member Award interviews on Sept. 6th and earned the following honors and award trips.

Beginning Leadership Award

Promise Kreinbring
Brielle Mesik

Outstanding Leadership

Aaron Folsom

Young Entrepreneur

Nick Pully

Ambassadors

(new)

Nick Pully
Promise Kreinbring
Brielle Mesik
Paige Tuura
Victor Hart

(returning)

*Sophya Zangri
McKenzie Tuura
Drew Tuttle
Seth Johnson
Aaron Folsom
*Emilee Manley
*Evelyn Sanda

*=didn't apply for OMA in 2018

Northern District Winter Camp

Nick Pully
Promise Kreinbring
Brielle Mesik
Paige Tuura
Sean Meeker
Victor Hart
Jon Kubik
Seth Johnson
McKenzie Tuura
Drew Tuttle

Bayfield County Adventure Trips

Nick Pully
Promise Kreinbring
Brielle Mesik
Paige Tuura
Sean Meeker
Victor Hart
Jon Kubik
Seth Johnson
McKenzie Tuura
Drew Tuttle
Aaron Folsom

Fall Forum

Nick Pully
Promise Kreinbring
Brielle Mesik

Paige Tuura
McKenzie Tuura
Drew Tuttle

WI 4-H & Youth Conference

Nick Pully
Promise Kreinbring
Brielle Mesik
Victor Hart
McKenzie Tuura
Drew Tuttle

Citizenship Washington Focus

Seth Johnson
Drew Tuttle

Superior Days

Sean Meeker
McKenzie Tuura
Drew Tuttle

Not awarded this year:
Outstanding Youth Project Leader
Community Service
Advanced Entrepreneurship
Legislative Citation
American Spirit Trip

2018-19 Bayfield County 4-H Club Organizational Leaders Thanks to all new and returning volunteers!

Clover Valley

Roger Branham

Drummond Explorers

Andy & Kelli Tuttle

Friendly Valley

Pat Shields
Rebecca Crumb-Johnson

Gitche Gumee

Peggy Golly
Cindy Luzzatto

Great Divide

Heather Gibbs
Jeff Dryer

Hillcrest-Mt. Valley

Candy Webb

Ino Valley

Glory Bizub

Pine Creek

Caloney Mesik
Amanda Tutor

Whispering Pines

Susan Ostrenga

Whittlesey Creek

Sarah Kreinbring
Sarah Pully

4-H CANSKI

Weispfenning, Lisa

We at Gitche Gumee 4-H have come to truly appreciate the sharing and help that our friends and local businesses have so generously given. Their support has made our 64th Annual Oulu Halloween Carnival a huge community success! Join us in saluting our 4-H friends, neighbors and local business partners.



ASHLAND

Ashland Ford/Chrysler
Ashland Family Restaurant
Ashland Honda/Toyota
Axel's Saw & Tool
Benoit Cheese
Bob's Factory Outlet
Breakwater Restaurant
Designer Outlet
Hugo's Pizza
Huhn Drug
L & M
Little Caesar's
Midland Services
Napa Auto Parts
New China Restaurant
Omer Nelson Electric
Scissors Edge
Sherwin Williams
Shoe Shack
Tractor Supply
True Value Hardware
United Ag
Von Holzen

BRULE

Brule Motel & Campground
Brule Spur Service
Copp's Tire & Auto Service
Kro Bar
North Bay Trading Co.
Round Up North
Twin Gables Restaurant
Ricky Tuura

IRON RIVER

A & L Automotive
Angie's Bakery
Auto Value
Bayfield Electric
Battle Axe Saloon
Boogies
Chippewa Valley Bank
The Fig Leaf Thrift Store
Forever Marge's
Idea Design Studio
Iron River Building Products
Iron River Co-op Foods
Iron River Hardware Hank
Jim's Meat Market
Judy's Drift Inn
Lawler Dentistry
Napa Auto Parts
Northland Veterinary Services
O'Brian's C-Store
Oulu Log Builders

Pizza Parlor
Ryan & Francine Pyykola
Roberto's Pizza
Salon Marcel
Security State Bank
This Old Bunk House
White Winter Winery

Maple

Aroma's Bistro
Maple Hill Feed

MASON

Bob Hamann Logging
Lulich Implement
Northland Lawn & Sport

POPLAR

Poplar Auto Refinishing
Poplar Hardware

PORT WING

Bear Paw Restaurant
The Port Bar & Restaurant
South Shore Bar

SUPERIOR

Auto Value
Kimmes Oil, Tire & Propane
Laakso Concrete
Construction

Thank You!

UW-Extension PARENTS CONNECT

Parents Connect is an online series for area parents, grandparents and other caregivers. It features strength-based learning, discussion, videos, & more.

For parents of kids ages 3-12.

Twice monthly; Tuesdays at 1:00 or 6:00pm. Join via phone/laptop/computer.



Next Up: Trouble with Friends & Bullies

December 11 n Registration Required n Free

Live video conference at 1:00 & 6:00 pm

To register or learn more, call 715-682-7017 or 715-373-6104

Or [Register Online](https://bayfield.uwex.edu/) at <https://bayfield.uwex.edu/>

Watch for our Winter 2018 Lineup

An AA/EEO employer, University of Wisconsin-Extension provides equal opportunities in employment and programming, including Title VI, Title IX and ADA requirements.

Leaders Meeting Minutes

Bayfield County 4-H Leader's Association Annual Meeting

Monday, November 28, 2018, 7:00 pm

Eileen Town Hall

Call to order

Pledges

Present: Cindy Luzzatto; Gitche Gume, Roger Branham: Clover Valley, Ian Meeker UW Extension, Rebecca Crumb-Johnson: Friendly Valley, Jeff Dryer: Great Divide, Sarah Pully: Whittlesey Creek, Glory Bizub: Ino Valley, Verne Gilles: financial adviser, Kelli Tuttle: Drummond Explorers

Secretary's Report: Minutes: Rebecca Crumb-Johnson: Verne Gilles made motion to accept. Cindy Luzzatto seconded motion. Motion carried.

Treasurer's Report: Roger Branham made a motion to accept. Kelli Tuttle seconded. Motion carried. Verne presented annual financial report. Cindy Luzzatto made motion to accept. Sarah Pully seconded. Motion accepted.

Committee Reports: By-law committee suggested the following by-law changes: Section A: item 2: change to: The Bayfield County Ambassadors shall send a representative to serve as at large member of the board.

Add to Section A: item 9: The executive board may appoint a financial advisor to assist the treasurer.

Add to Section B: item 6: Investment advisor will manage leader associations Cd's or other investments and perform other duties as assigned by the executive board.

Correspondence: thank you letter from the horse bowl participants. Members should be aware they can purchase a 4-H Wisconsin car license plate. The funds will help support Wisconsin 4H.

Chris Beeksma attended the 4H Horse Leaders Conference in River Falls and requested reimbursement in the amount of \$369.46. includes registration fee of \$50, hotel costs of \$184.36 and mileage of \$135.10.

The horse members requested \$10 for the eight-member team that attend the State Horse Expo.

Cindy Luzzatto made a motion to reimburse amounts requested. Jeff Dryer seconded. Motion carried.

VII. Old Business

- a. 4-H Enrollment: please remind your members and leaders to enroll on the state web site. Ashwabay has changed to a mountain bike club.
- b. Awards dinner: Positive feedback regarding the award's ceremony. Next year it will be held at the Iron River Community Center.
- c. 4H winter camp: will be held at Crosswoods on Martin Luther King weekend.

VIII. New Business

- a. Review Budget: Sarah Pully made a motion to accept. Glory Bizub seconded. Motion accepted.
- b. Election of officers: Roger Branham nominated Rebecca Crumb-Johnson as president. Rebecca accepted the nomination. Roger made a motion to close the nominations and set a vote. Cindy Luzzatto seconded. Committee approved Rebecca as president.
Roger Branham nominated Kelly Tuttle as secretary. Kelli accepted the nomination. Roger made a motion to close nominations and set a vote. Cindy Luzzatto seconded. Committee approved Kelli as secretary.
- c. Review Calendar, committee sign-up and host sign-up
- d. Club communication and sharing successes and challenges: club leaders gave updates for their individual clubs
- e. 4H charters: Ian has e-mailed you if you have not yet completed your charter.
- f. 4-H CANSKI: Gear check out for middle school and high school is November 26 and elementary the first week of January.

Cindy Luzzatto made a motion to adjourn. Sarah Pully seconded. Motion carried

Next 4-H Leader's Association Meeting: The next meeting will be January 21, 2019. Whittlesey Creek is hosting.



2018-2019 Schedule

www.4hcanski.org



REGISTRATION

2018-2019 CANSKI Registration

Will take place **Online** at: <http://wi.4HOnline.com>

Families of members and adult leaders will need to register at this site, 4-H CANSKI will appear in a club dropdown box during registration.

Limited online registration access will be provided at gear check-out but members are encouraged to complete this prior to their arrival. Payment can be mailed to:

UW-Extension Ashland County ~ 201 W Main St, Courthouse Rm 107 ~Ashland, WI 54806

...or brought to the gear check out. Members not registered on the day of gear check- out will need to register on-site before they can check-out gear. **Direct questions to: Doug Liphart** Ashland County 4-H~715-682-7017 or **Ian Meeker** Bayfield County 4-H ~ 715-373-6104 ext. 3

Event	For Whom	Location	Time	Start Day/Date
AHS Wax and Gear Prep	All	Ashland School District Garage	5:00 PM	November 8
Annual Business/Member Meeting	All	Washburn High School	6:00 PM	November 13
HS/MS Gear Check Out	HS MS	Ash Elem School Commons	5:30 - 7:00 PM	November 29
Elementary/Other Gear Check Out	Elementary	AES Commons	5:30 - 7:00 PM	January 8
Start of MS/HS Rec Skiing	MS/HS	Ashland MMC Trails	4:00 PM	January 10
Start of Elementary Skiing After School	Elementary & Adult	Ashland MMC Trails OR Lake Superior View Golf Course Washburn	3:30 - 4:20 PM 3:45 - 4:30 PM	January 11
Free Community Ski Clinic	All	TBD	TBD	January 26
Ashwabab Summit Ski Race/Tour	All	Mt. Ashwabab	Races at 9:30 AM	February 2
Book Across the Bay	All	Ashland, WI & Washburn, WI	Start Time at 6:00pm	February 16
Jr. Birkie, & Barnebirkie	All	Hayward, WI	12:00 PM	February 21
Korteloppet	All	Hayward, WI	9:00 AM	February 22
Birkie	All	Hayward, WI		February 23
End of Year Shindig	All	Mt. Ashwabab	5:00 PM	February 28
Gear Check-in	All	AES Commons	5:30 - 6:30 PM	March 7 & 12

2018-2019 CANSKI Registration Will take place *Online* at:

<http://wi.4Honline.com>

Families of members and adult leaders will need to register at this site, 4-H CANSKI will appear in a club dropdown box during registration.
Limited online registration access will be provided at gear check-out but members are encouraged to complete this prior to their arrival. Payment can be mailed to:

UW-Extension Ashland County
201 W Main St, Courthouse Rm 107
Ashland, WI 54806

...or brought to the gear check out. Members not registered on the day of gear check-out will need to register on-site before they can check-out gear.

Direct questions to:

Doug Liphart Ashland County 4-H
715-682-7017

Ian Meeker Bayfield County 4-H
715- 373-6104 ext. 3

REGISTRATION

DUES

Membership Dues:

Annual dues: \$30/individuals
 \$60/families

Provides club hat or T-shirts (2/family), instruction, 4-H membership, event coordination, and accident insurance. Does not include equipment. **Please make checks payable to 4-H CANSKI.**

Access to Club Equipment (optional):

\$25/skier (middle or high school aged skier)
 \$60/family
 \$15/elementary aged skier

*Note: \$20 damage/late return deposit required at time of checkout (refunded at check-in if gear is in good condition and returned on March 7th or 12th).

Transportation fee (optional) for MS & HS skiers:

\$35 (for Washburn skiers) and \$25 (for Ashland skiers) provides a seat on the BART to and from practices. Space is limited. **Make this check payable to BART**

Scholarships are available, please ask!



4-H CANSKI offers program hubs:

Elementary Schools

Instruction: classic and skate recreational K-5th

Schedule: Fridays after school starting January 11, 2019

In Ashland - 3:30 pm - 4:20 pm

Location: Ashland Hospital Trails

Contact: Betty Swiston (715) 682-7622

principal@ourladyos.org

Betty is also the contact for Our Lady of the Lake

Zach Larson at Marengo Valley School

zlarson@sdak12.net

In Washburn - 3:45 pm - 4:30 pm

Location: Lake Superior View Golf Course off of Hwy C

Contact: Lisa Weispfenning (715) 812-1073 (h) & (715) 209-6856 (c)

lisadlind@hotmail.com

Middle & High Schools

Instruction: classic & skate recreational & racing

Schedule: Tuesdays 4:00 pm at Ashwabay &

Thursdays 4:15 pm at Ashland

Start dates: recreational January 11, 2019

Ashland Contacts:

Doug Liphart (715) 682-7017 (w)

doug.liphart@ces.uwex.edu

Ivy Berg at AMS (715) 682-7087 ext. 2152 (w)

iberg@sdak12.net

Abby Scheller at AHS (763) 647-0043 (call or text) (c)

ascheller@sdak12.net

Washburn Contacts:

Middle School - Ian Meeker (715) 373-6104 ext 3 (w)

ian.meeker@ces.uwex.edu

High School - Beth Reed (715) 682-8385 (h)

breed@washburn.k12.wi.us

PROGRAMS

GEAR

4-H CANSKI Gear Policy

Gear checkout policies:

- Priority is given to active youth members
- Gear available only during scheduled checkouts
- 4-H members assume replacement cost for lost or abused equipment
- Members must be registered online prior to rental

Renters' responsibilities:

- Ski at least once a week with the club
- Attend a wax clinic
- Return gear on/ before the end of year gear return dates

4-H CANSKI encourages teen & adult members to purchase personal equipment after two years.

Local shops give club discounts.

Recommended apparel:

- Hat and gloves or mittens*
- Wool or synthetic socks (not cotton or ankle socks)
- Long underwear or synthetic shirt (not cotton)
- Wind or snow pants, sweater or jacket (jeans or cotton pants not recommended)

*** Elementary skiers CANNOT ski without a hat and gloves/mittens.**



Bayfield County Extension Office
U.S. Department of Agriculture
Cooperative Extension Service
Courthouse, P.O. Box 218
Washburn, WI 54891



Change Service Requested

Check us out on the web!
<http://bayfield.uwex.edu/>



<https://www.facebook.com/bayfieldcounty4H/>



<https://twitter.com/BayCoExtension>

An EEO/AA employer, University of Wisconsin Extension provides equal opportunities in employment and programming, including Title IX and the Americans with Disabilities Act (ADA) requirements. "Requests for reasonable accommodations for disabilities or limitations should be made prior to the date of the program or activity for which it is needed. Please do so as early as possible prior to the program or activity so that proper arrangements can be made. Requests are kept confidential."

Support Staff:
 Theresa LaChapelle
 Office Manager
 Bayfield County
 Support Staff
 Karen Swanson
 Bayfield County
 Ariadna Chediak
 Ag Research Assistant
 Bayfield County

Matt Cogger
 Horticulture Educator
 Bayfield County
 Liz Lexau
 Family Living Educator
 Bayfield County
 Kellie Pederson
 Community Development
 Bayfield County

Ian Meeker
 4-H & Youth Development
 Bayfield County
 Donna Ganson
 4-H Program Assistant/
 Nutrition Educator
 Bayfield County
 Jason Fischbach
 Agricultural Agent
 Bayfield/Ashland Counties



UW-Extension Bayfield County
 Phone: 715-373-6104 ~ FAX: 715-373-6304
 711 for Wisconsin Relay (TDD)

Editors: Ian Meeker & Donna Ganson

Bayfield County 4-H Newsletter

